

PETTIBONE

1530 EXTENDO SERIES



Hands down, the Extendo is the hardest-working machine on the job.

With the highest lift capacity in its class, plus unmatched maneuverability, it's the only machine that gets you where you need to go.

MAXIMUM LOAD-HANDLING EFFICIENCY

- Single joystick control for all boom functions
- Rapid-response hydraulic system
- Auxiliary boom tip hydraulics
- Quick disconnect for attachments

POWERFUL MANEUVERABILITY

- Four-wheel drive
- Two-wheel, four-wheel and crab steering
- Up to 21" (53.3 cm) of ground clearance

BUILT STRONGEST FOR THE TOUGHEST LOADS & SITES

- Two wide-stance, heavy-duty lift cylinders
- Automatic fork leveling without slave cylinders
- 20° frame sway (10° left and right of center)
- Rear axle stabilization system¹
- 14.00 x 24 - 16 ply tires²

PEAK PERFORMANCE IN ALL CONDITIONS

- Cummins 130hp, Tier III, turbo diesel engine with full electronic control and protection
- Fully modulated Dana powershift transmission with four speeds forward and three reverse with declutch
- Dana outboard planetary axles with oil-immersed, inboard service and parking brakes

GREATER OPERATING COMFORT AND SAFETY

- Unmatched visibility from the cab
- Adjustable suspension seat with seat belt
- Fully adjustable right-side arm rest
- Full set of gauges for instant machine status

WARRANTY

The Best in the Industry

- 1 year/1,000 hour Bumper to Bumper
- 2 year/2,000 hours Powertrain Components
- 3 year/3,000 hours Structural Components

¹ Not available on Extendo Series 736.
² 13.00 x 24 - 14 ply tires on Extendo Series 736, 744, 936 and 944.
1157 requires foam filled tires.

628		
Max. lift capacity	6,000 lbs. (2,722 kg)	
Max. lift height	28' (8.5 m)	
636		
Max. lift capacity	6,000 lbs. (2,722 kg)	
Max. lift height	34'6" (10.5 m)	

736		
Max. lift capacity	7,000 lbs. (3,175 kg)	
Max. lift height	36' (11.0 m)	
744		
Max. lift capacity	7,000 lbs. (3,175 kg)	
Max. lift height	44'4" (13.5 m)	

936		
Max. lift capacity	9,000 lbs. (4,082 kg)	
Max. lift height	36' (11.0 m)	
944		
Max. lift capacity	9,000 lbs. (4,082 kg)	
Max. lift height	44'4" (13.5 m)	

1144		
Max. lift capacity	11,000 lbs. (4,990 kg)	
Max. lift height	44'6" (13.6 m)	
1157		
Max. lift capacity	11,000 lbs. (4,990 kg)	
Max. lift height	57' (17.4 m)	

1530		
Max. lift capacity	15,433 lbs. (7,000 kg)	
Max. lift height	30' (9.1 m)	

EXTENDO SERIES



1530

Performance

Maximum Lifting Capacity

-15,433 lbs (7,000 kg)

Maximum Lift Height

-30' (9.1 m)

Maximum Forward Reach

-17'5" (5.3 m)

Below Grade Reach

-1" (0.02 m) Fully Retracted
-15" (0.4 m) Extended

Maximum Travel Speed

-20 mph (32 km/h)

Frame

-20° of Leveling (10° right and left)

Turning Radius

-16' (4.9 m)

Standard Equipment

Engine

- Cummins 130 hp Tier III Turbo Diesel with Electronic Control & Protection
- 32.5 Gallon (123.0 L) Fuel Tank

Transmission

- Modulated Dana Powershift
- Four Speed Forward
- Three Speed Reverse

Axles

- Four-wheel Drive
- Dana Planetary Axles

Steering

- Four-wheel, Two-wheel and Crab Steer

Brakes

- Oil-Immersed, Inboard Disc Service Brakes
- Integral Park Brake

Tires

-16.00 x 24, 16 ply

Boom

- Automatic Fork Leveling Without Slave Cylinders
- Two Wide-stance, Heavy-duty Lift Cylinders

Cab

- Unmatched Visibility
- Adjustable Suspension Seat with Seat Belt
- Fully Adjustable Right-side Arm Rest
- Full Set of Gauges for Instant Machine Status

Hydraulics

- Piston Pump
- Rapid Response Hydraulic System
- Auxiliary Boom Tip Hydraulics
- Quick Disconnect for Attachments
- Single Joystick for all boom functions

Attachment

-72" (1.8 m) Standard Fork Frame

Optional Equipment

- GPS Equipment Management System
- Light Packages
- Enclosed Cab (HWD)
- Additional Options Available

Dimensions

Height

9'5" (2.9 m)

Length

22'7" (6.9 m) to Fork Frame

Width

102" (2.6 m)

Ground Clearance

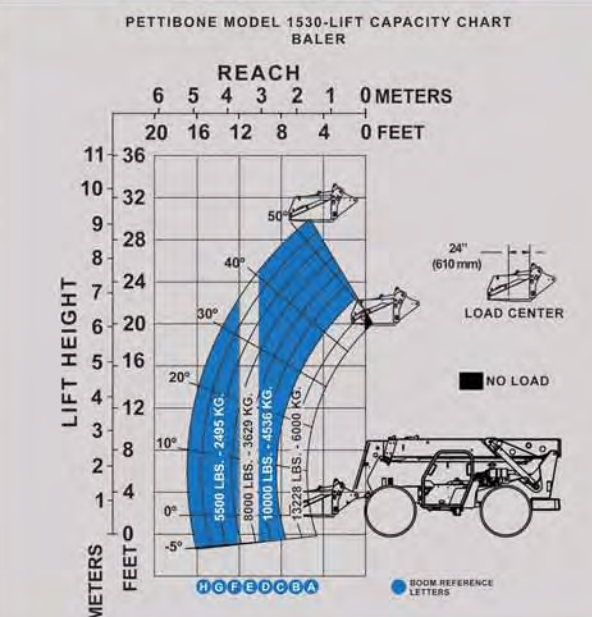
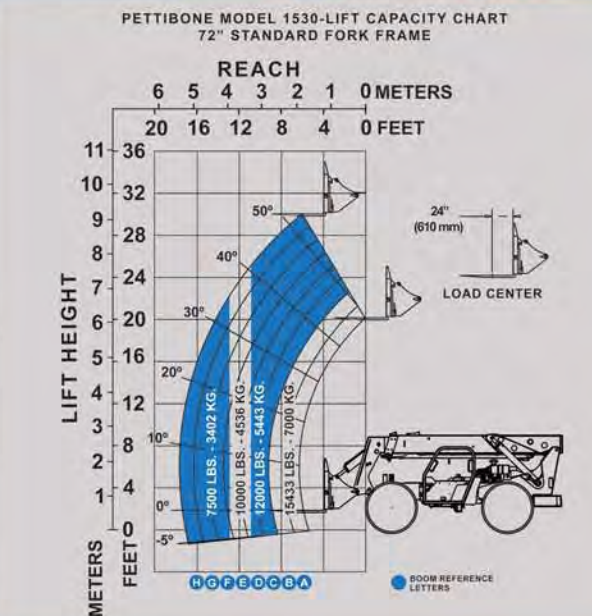
21" (0.5 m)

Curb Weight (approximate)

Standard Fork Frame
-31,520 lbs (14,298 kg)
Baler
-32,000 lbs (14,515 kg)



enlarged image of 1530 on back





1100 SUPERIOR AVE, BARAGA, MI 49908
800.GO.PETTIBONE
WWW.GOPETTIBONE.COM



1530 EXTENDO SERIES



Max. lift capacity	15,400 lbs. (7,000 kg)
Max. lift height	30' (9.1 m)
Max. forward reach	17' 5" (5.3 m)
Overall height	9' 5" (2.9 m)
Curb Weight	
Standard Fork Frame	31,520 lbs (14,297 kg)
Baler	32,000 lbs (14,515 kg)

NOTE: The Company reserves the right to change specifications and prices without notice in order to follow its policy of constantly striving to manufacture a better product without incurring any liability to provide these new features on any units previously manufactured. Prices and specifications subject to change without notice.